

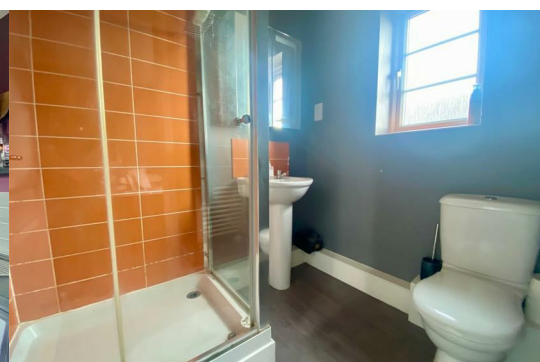


14c Molyneux Square Hampton Vale Peterborough PE7 8WA

Guide price £145,000



A modern second floor apartment with open views over green area to front, located in Hampton Vale, within easy reach of local shops, schools and road links. The accommodation comprises two double bedrooms, en suite to master bedroom, kitchen with integrated appliances, UPVC double glazing, gas central heating and well presented throughout. There are two parking spaces within a gated area. *** MUST BE SEEN ***



Entrance Hall

Bedroom 1 4.25m (13'11") max x 2.88m (9'5")

En-suite

Bathroom

Lounge Area 3.57m (11'9") x 3.49m (11'5")

Kitchen Area 3.28m (10'9") x 1.92m (6'4")

Bedroom 2 3.24m (10'7") x 2.46m (8'1")

OUTSIDE

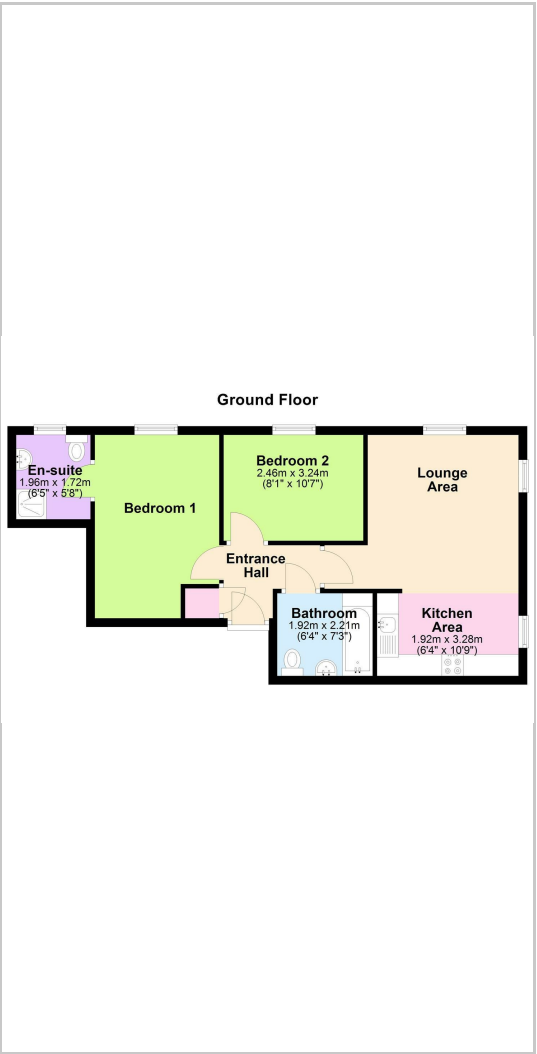
Two parking spaces in gated area.

*** If you are considering letting this property for a BUY TO LET please call Fitzjohn Property Rentals on 01733 555520. We can provide you free advice on all aspects of the lettings market including potential rental yields for this property ***

Area Map



Floor Plans



Energy Efficiency Graph

